

VITA COMPACT VERTICAL

Vita Series

50 Δt

(75/65/20°C)

K2



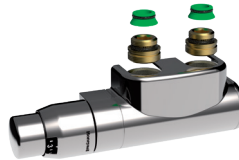
Height mm	Length mm	Sections	Stelrad UIN	Watts	Heat output Btu/h	Price excl VAT	Price incl VAT
1800	400	12	89121418	1584	5405	£174.23	£209.08
	500	15	89122518	1980	6756	£191.53	£229.84
	600	18	89122618	2376	8107	£209.65	£251.58

$\Delta t50$ is the UK's industry standard for heating outputs, which has an operating temperature of 75/65/20°C. If you have a low temperature heat source you may wish to consider $\Delta t40$ or $\Delta t30$ output (see your installer or system designer or download from www.stelrad.com).

For EN442 data, technical and installation information please visit our website: www.stelrad.com and search product downloads.

CENTRE TAP TRV NOW AVAILABLE

Stelrad UIN	Description	Price excl VAT	Price incl VAT
145313	Straight White	£50.00	£60.00
145314	Straight Chrome	£50.00	£60.00
145315	Angled Left White	£50.00	£60.00
145316	Angled Left Chrome	£50.00	£60.00
145317	Angled Right White	£50.00	£60.00
145318	Angled Right Chrome	£50.00	£60.00

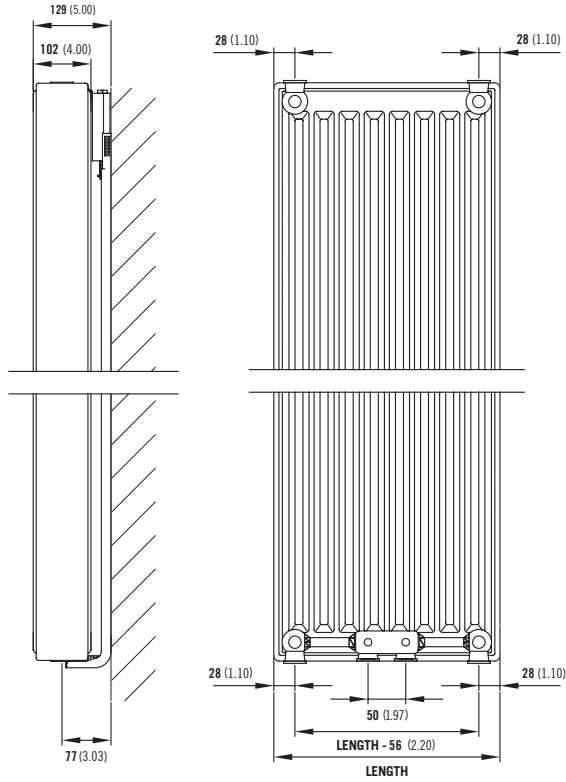


VITA COMPACT VERTICAL

Vita Series

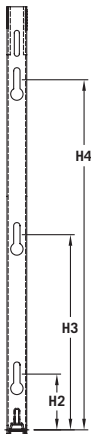
WALL MOUNTING AND LUG INFORMATION

All dimensions in mm. Inches in brackets.



Comes complete with Stelrad's class leading safety bracket.

MOUNTING BRACKETS



Height		H2		H3		H4	
mm	inches	mm	inches	mm	inches	mm	inches
1800	70.87	70	2.75	830	43.89	1590	63.58

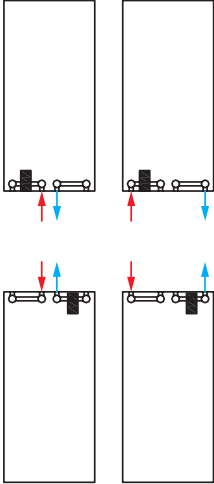
CONNECTIONS

Each radiator comes with 1/2" inlet connections as standard.

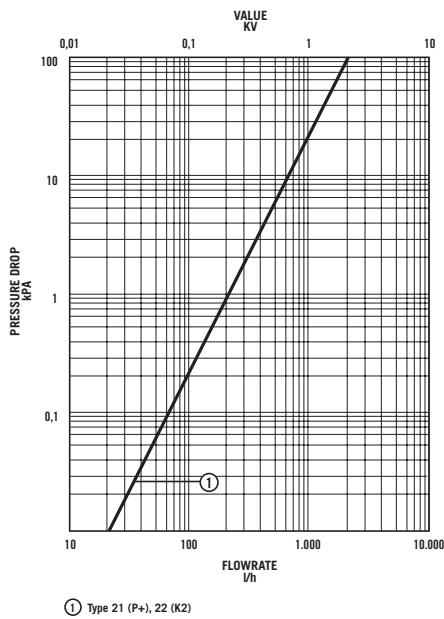
VITA COMPACT VERTICAL

Vita Series

PIPING OPTIONS



PRESSURE DROPS



EN 442 CERTIFICATION DATA - CETIAT TESTED IN ACCORDANCE WITH BS EN 442

Type	K2
Height	1800
W/m at 75/65/20	3960
n-coefficients	1.33
Heated surface area (m ² /m)	29.90
Weight (kg/m)	88.80
Water contents (l/m)	16.20
Wall to tap centre (mm)	77
K _M	21.70