

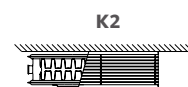


LST PLUS VERTICAL

Safety Series

50 Δt

(75/65/20°C)



Casing Height mm	Casing Length mm	Emitter Height mm	Emitter Length mm	Stelrad UIN	Watts	Heat output Btu/hr
2110	560	1800	400	142241	1271	4337
	660	1800	500	142242	1588	5418
	760	1800	600	142243	1855	6330

$\Delta t50$ is the UK's industry standard for heating outputs, which has an operating temperature of 75/65/20°C. If you have a low temperature heat source you may wish to consider $\Delta t40$ or $\Delta t30$ output (see your installer or system designer or download from www.stelrad.com).

For EN442 data, technical and installation information please visit our website: www.stelrad.com and search product downloads.

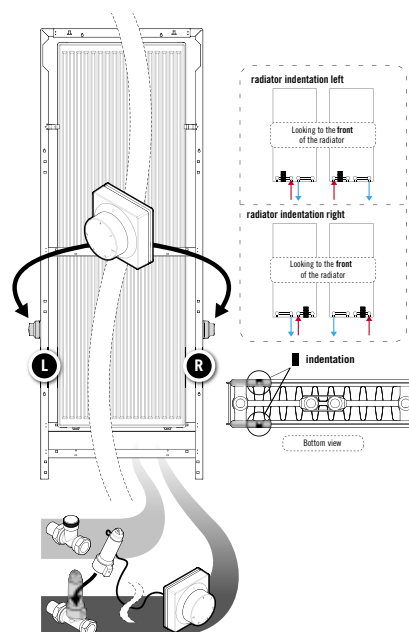
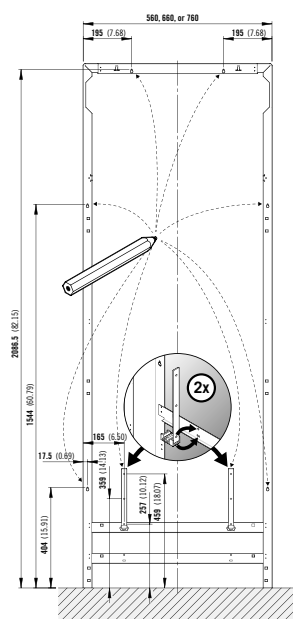
LST PLUS VERTICAL

Safety Series

INSTALLATION INSTRUCTIONS

All dimensions in mm. Inches in brackets.

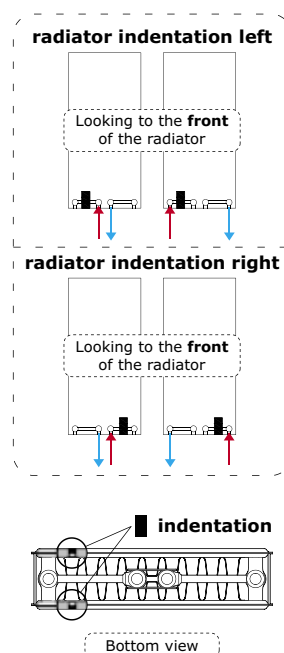
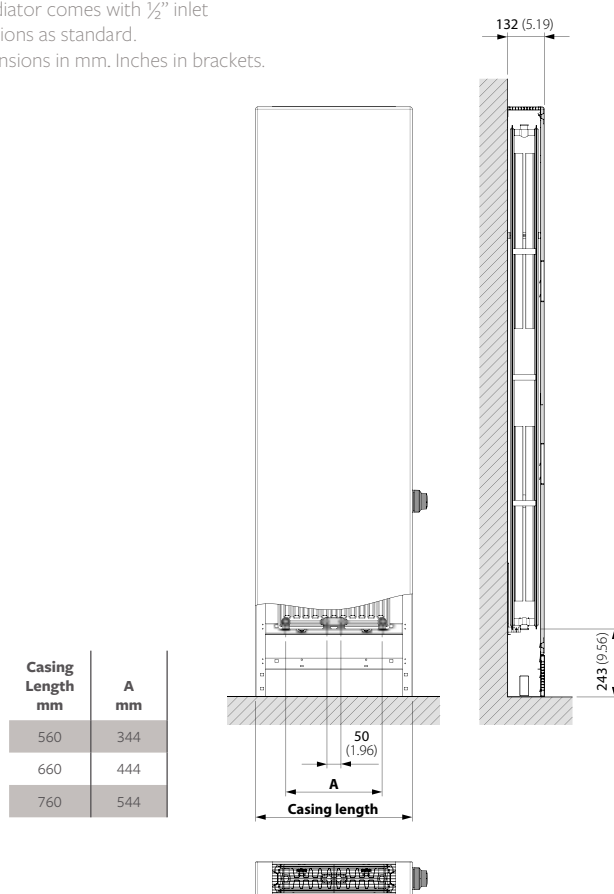
Present casing and bottom bracket to the wall and mark drill hole positions. Fit pipework and valve connections to the radiators.



CONNECTION OPTIONS

Each radiator comes with 1/2" inlet connections as standard.

All dimensions in mm. Inches in brackets.



CONNECTIONS

Each radiator comes with 1/2" inlet connections as standard.

LST PLUS VERTICAL

Safety Series

EN 442 CERTIFICATION DATA - CETIAT TESTED IN ACCORDANCE WITH BS EN 442

Type	K2		
Casing height	2110	2110	2110
Casing length	560	660	760
Emitter height	1800	1800	1800
Emitter length	400	500	600
W/m at 75/65/20	1271	1588	1855
n-coefficients	1.33	1.35	1.35
Heated surface area (m ² /m)	12.00	15.00	17.90
Emitter weight (kg/m)	33.20	42.00	50.50
Water contents (l/m)	7.50	9.60	11.50
KM	6.96	8.06	9.58

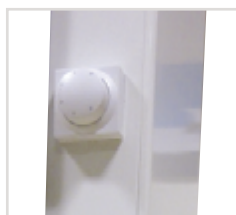
COMPONENTS



LST Plus Vertical front casing view - height.



LST Plus Vertical inside the casing showing the emitter.



LST Plus Vertical oblong knockout for pipe.



LST Standard circular knockout for TRV. Oblong knockout for pipe.