

# HOME

SERIES

Exclusive  
to Stelrad  
Group plc

Lecco

BRINGING RADIATOR STYLE INTO UK HOMES

# LECCO

---

## 50 $\Delta$ t

(75/65/20°C)

### STRAIGHT

Height mm	Length mm	Stelrad UIN	Watts	Heat output Btu/hr
<b>1200</b>	500	730001h	200	682

$\Delta$ t50 is the UK's industry standard for heating outputs, which has an operating temperature of 75/65/20°C. If you have a low temperature heat source you may wish to consider  $\Delta$ t40 or  $\Delta$ t30 output (see your installer or system designer or download from [www.stelrad.com](http://www.stelrad.com)).

For EN442 data, technical and installation information please visit our website: [www.stelrad.com](http://www.stelrad.com) and search product downloads.

# LECCO

## WALL MOUNTING INFORMATION

All dimensions in mm.

## TOOLS REQUIRED FOR INSTALLATION



## INSTALLATION INSTRUCTIONS

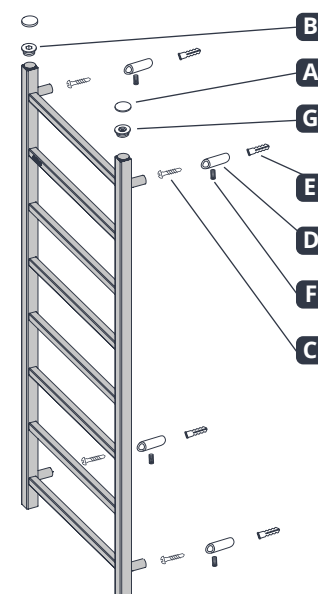
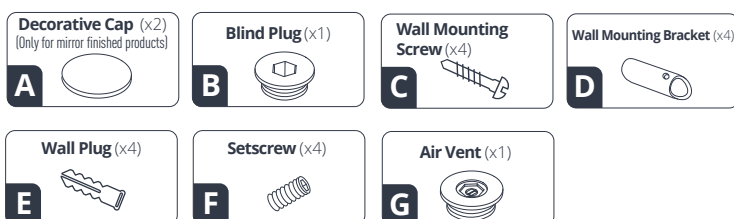
Place your radiator at least 12.5 cm above the floor.

Provide insulation by wrapping PTFE tape on the threads before installing the valves.

Apply silicone seal fluid to all treaded parts containing o-rings.

Connect your radiator to the utilities after following all the installation steps in the manual.

After connecting to the utilities, do not forget to discharge the trapped air inside the radiator.



## INSTALLATION INSTRUCTIONS FOR THE STAINLESS STEEL TOWEL RAIL

