

# HOME

SERIES



*Classic  
Compact Vertical  
1200*

## 50 $\Delta$ t

(75/65/20°C)

K2

1200	Height mm	Length mm	Sections	Stelrad UIN	Watts	Heat output Btu/hr
	300	9	31122203h	867	2958	
	400	12	31122204h	1156	3944	
	500	15	31122205h	1445	4931	
	600	18	31122206h	1733	5913	
	700	21	31122207h	2022	6899	

$\Delta$ t50 is the UK's industry standard for heating outputs, which has an operating temperature of 75/65/20°C.

### CENTRE TAP TRV



UIN	Elements
14531310	CENTRE TAP TRV STRAIGHT WHITE - 10MM
14531312	CENTRE TAP TRV STRAIGHT WHITE - 1/2IN
14531315	CENTRE TAP TRV STRAIGHT WHITE - 15MM
14531410	CENTRE TAP TRV STRAIGHT CHROME - 10MM
14531412	CENTRE TAP TRV STRAIGHT CHROME - 1/2IN
14531415	CENTRE TAP TRV STRAIGHT CHROME - 15MM
14531510	CENTRE TAP TRV ANGLED L WHITE - 10MM
14531512	CENTRE TAP TRV ANGLED L WHITE - 1/2IN
14531515	CENTRE TAP TRV ANGLED L WHITE - 15MM
14531610	CENTRE TAP TRV ANGLED L CHROME - 10MM
14531612	CENTRE TAP TRV ANGLED L CHROME - 1/2IN
14531615	CENTRE TAP TRV ANGLED L CHROME - 15MM



WARRANTY



EPD  
VERIFIED



IN STOCK



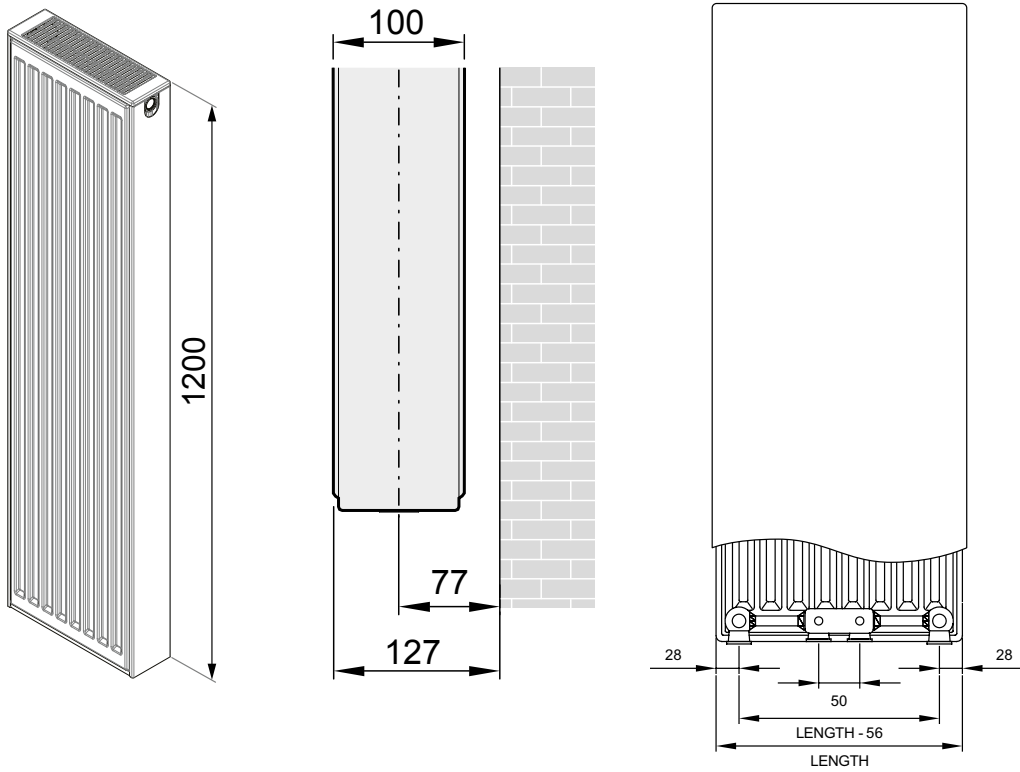
TRAFFIC  
WHITE ONLY

# CLASSIC COMPACT VERTICAL 1200



## WALL MOUNTING INFORMATION

All dimensions in mm.

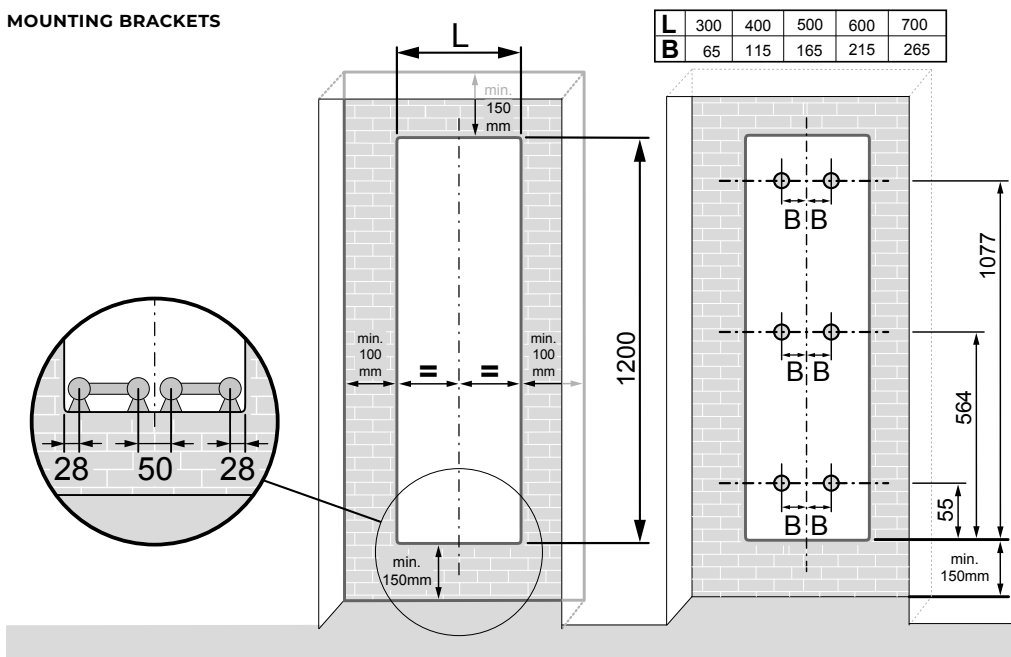


Comes complete with Stelrad's class leading safety bracket.

## CONNECTIONS

Each radiator comes with 1/2" inlet connections as standard.

## MOUNTING BRACKETS

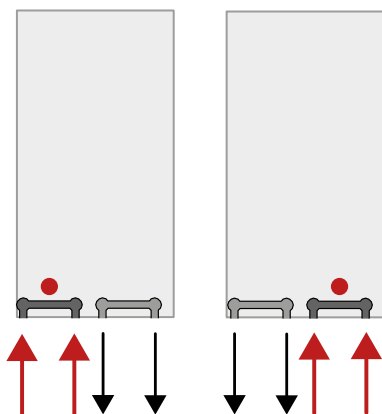


## EN 442 CERTIFICATION DATA - CETIAT TESTED IN ACCORDANCE WITH BS EN 442

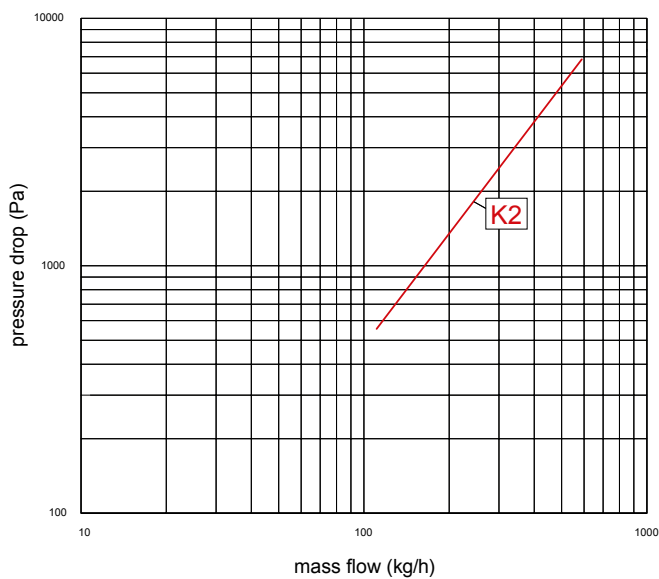
Type	K2
Height	1200
W/m at 75/65/20	2889
n-coefficients	1.33
Heated surface area (m <sup>2</sup> /m)	12.75
Weight (kg/m)	57.3
Water contents (l/m)	12.0

## PIPING OPTIONS

Front view



## PRESSURE DROPS



Type	Kv
K2	1.85